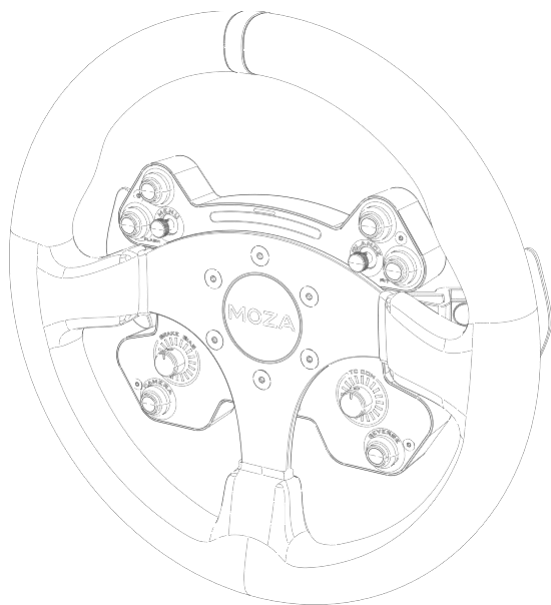




MOZA CS V2 Steering Wheel

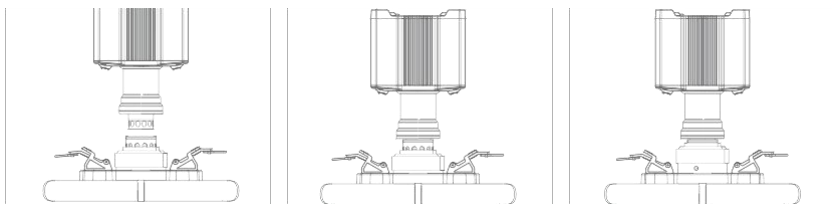
Hold on Tight, Experience Real Racing



01 Product Introduction

- 13-inch standard racing rim
- Aviation grade aluminum alloy frame
- Forged carbon fiber photoelectric magnetic paddle
- RGB sequential shift indicator
- Programmable mechanical buttons
- Customized quick release from real racing
- Wireless or wired power supply and communication technology

02 Quick Release Manual

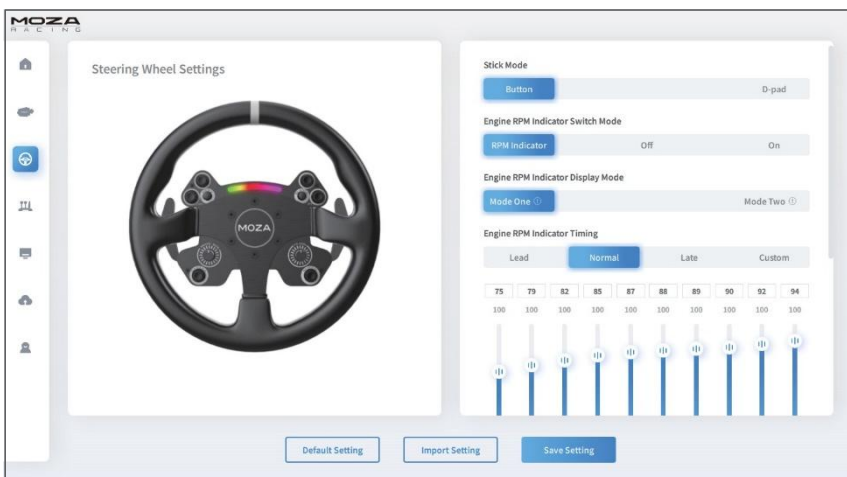
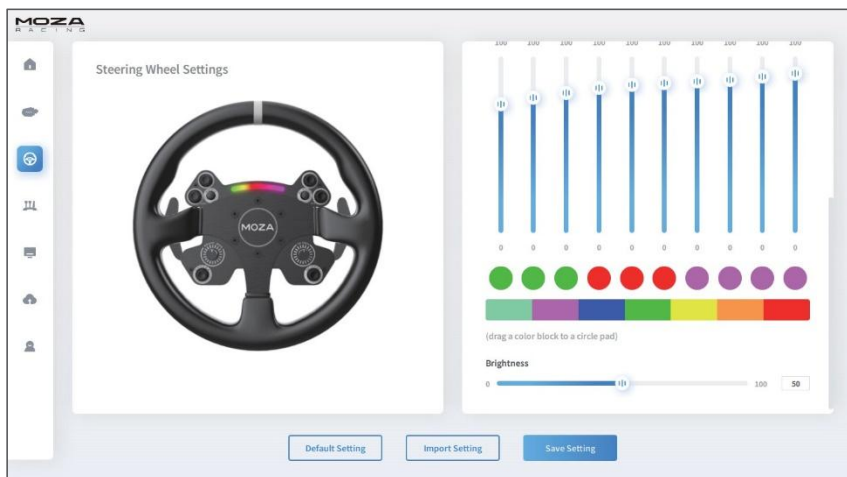


1. Match the 6 steel ball bearings on the female quick release head of the steering wheel with the 6 grooves on the quick release male head of the base
2. Press the quick release in the direction of the wheel
3. The quick release will automatically return to position and lock up, if not, you could try to rotate the wheel slightly or remove it and then reinstall it
4. If you need to remove the wheel, press the quick release with both hands, and pull out the wheel at the same time

03 Steering Wheel Configuration

You can set up the CS V2 steering wheel quickly and easily in the MOZA Pit House software.

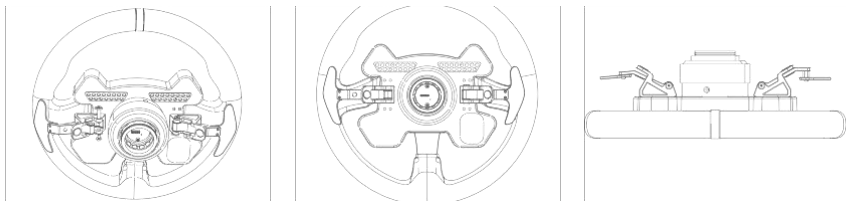
- Joystick mode: push buttons or cross keys
- Indicator switch mode: the indicator status has three modes which are matching rotating speed, off and always on.
- Indicators display mode: mode 1 and mode 2. Detailed explanations will pop up when clicking each option.
- Rev speed prompt setting: there are four modes according to the timing relationship between the rev speed and the shift indicator light, which are advanced, standard, extreme, and custom mode.
- Brightness adjustment: adjust the brightness of the shift indicator.
- Indicator color adjustment: drag the color block you like to the indicator to change the color.
- Shifter paddle calibration: if you are sensing abnormalities in the shifter paddle, click here to calibrate.



(For detailed steering wheel settings and functions, please visit the official website of MOZA Racing at www.mozaracing.com)

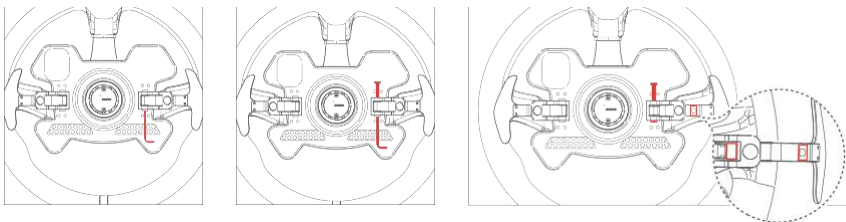
04 Install Heightening Block for Magnetic Paddle

Place the steering wheel on a flat surface facing down, use a hexagonal wrench to remove the screw on the side of the trigger lever of the shift paddle, and then use a wrench to lift the latch from the side of the magnetic paddle, and pull the trigger lever of the paddle outward to obtain the best space for disassembling and assembling paddles; use a hexagonal wrench to remove the screws on the shift paddles, put on the heightening block and tighten with the long screws, and finally put the latch back in place and tighten the screws. The heightening block can help shorten the distance between the magnetic shifter paddles and hands by 8mm.



05 Install Silence Pad for the Magnetic Paddle

Place the steering wheel on a flat surface, with the front facing down. Use a hexagonal wrench to remove the screw on the side of the trigger lever, then use a wrench to lift the latch from the side of the magnetic paddle (NOTE: you do not need to push it out completely. Just separating the trigger lever and the latch is fine). Apply the silencer pad on the back of the magnetic hole and the square hole on the shifter paddle (if it is inconvenient to operate, you can lift the latch completely). Do not apply the silencer pad on the square hole because this is the photoelectric trigger area. Finally, return the latch into place and tighten the screws.



06 Packing Details

1. CS V2 Steering Wheel
2. Tool kit: Hexagonal Wrench / 8mm aluminum heightening block x 2 / Silence pad x 4

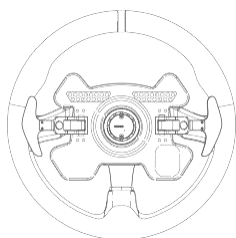
07 Product Parameters

Grip Material: microfiber leather
Frame Material: aluminum
Face Plate Material: aluminum
Magnetic paddle Material: forged carbon fiber Size: 13 inch
Magnetic Paddle: 2 pcs Mechanical
Keys: 6
Front-Facing knobs: 2 pcs (20-segment embedded steel ball type)
Universal Joystick: 2 pcs (pressable)

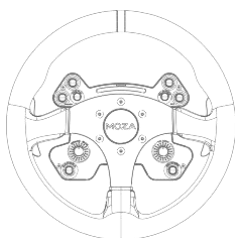
Highlighted LED RGB Light Beads: 10 pcs LED Color: 7 colors for customization
Intelligent Telemetry: yes
Adjust Lighting though MOZA Pit House: yes
Quick Release: yes
Power Supply Method: wireless and wire
Signal Transmission Method: wireless
Magnetic paddle sensor: contactless photoelectric sensor

01 产品介绍

- 13 英寸标准竞技环身
- 航空级铝合金骨架
- 锻造碳纤维磁吸光电拨片
- RGB 流水式换挡指示灯
- 高级机械键盘式可编程按钮
- 源自真实赛车的专属快拆系统
- 无线或有线供电和通讯技术

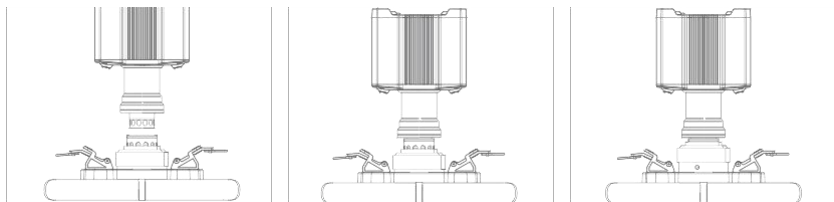


正面



背面

02 快拆使用方法

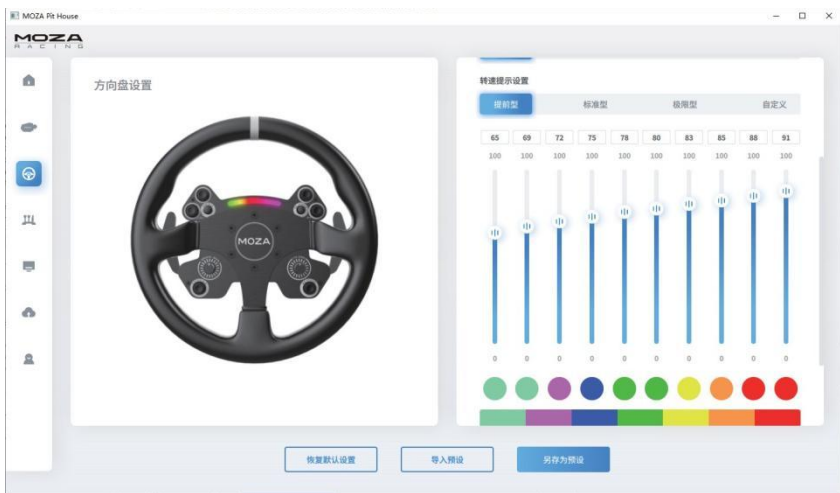
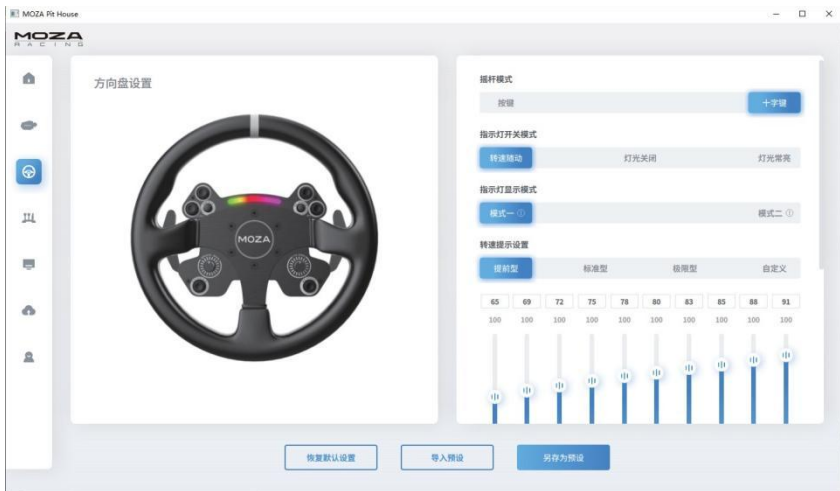


1. 将方向盘快拆母头上 6 颗钢珠的位置与底座快拆公头的 6 个凹槽对应
2. 将快拆往盘面方向按压
3. 快拆将自动归位锁紧，若无归位，可尝试轻微转动盘面或取下后再安装
4. 如需拆取盘面，用双手捏住黑色快拆部分，同时并拔出盘面

03 方向盘配置

在 MOZA Pit House 软件中可以方便快捷地对 CS V2 方向盘进行设置。

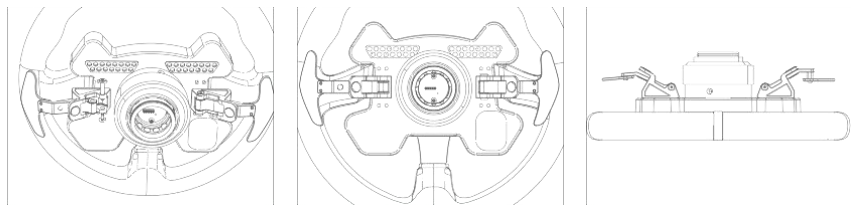
- 摇杆模式：设置摇杆操作模式，可设置为按键和十字键
- 指示灯开关模式：指示灯状态调节，分为随速转动，关闭和常亮
- 指示灯显示模式：共分为模式一和模式二，当鼠标移动到选项上时会弹出详细解释
- 转速提示设置：根据转速与换挡指示灯亮起的时机关系，分为提前型，标准型，极限型和自定义模式
- 亮度调节：调节换挡指示灯的亮度
- 指示灯颜色调节：将喜欢的色块拖动到指示灯上即可更换颜色
- 拨片校准：当拨片感应异常时，通过点击此处进行拨片校准



(详细方向盘设置与功能, 请访问 MOZA Racing 官网)

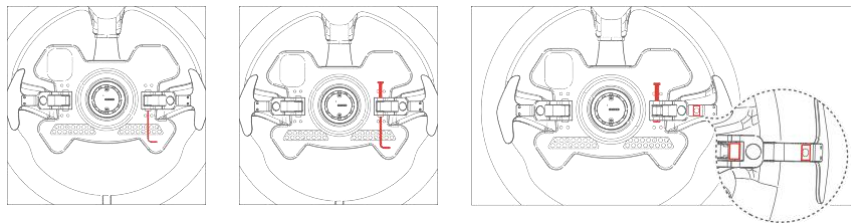
04 拨片接近块的安装

将方向盘放置于平面上使盘面朝下，使用六角扳手取下换挡拨片触发杆一侧的螺丝，再用扳手从磁吸拨片一侧顶开插销，将拨片触发杆向外拉以获得拆装拨片的最佳空间；使用六角扳手将换挡拨片上的螺丝取下，垫上增高块后用附带的长螺丝拧紧，最后将插销归位并装回螺丝，通过此垫片可将拨片与手的距离拉近8mm。



05 磁吸拨片静音垫的安装

将方向盘放置于平面上使盘面朝下，使用六角扳手取下换挡拨片触发杆一侧的螺丝，再用扳手从磁吸拨片一侧顶开插销（无需完全顶出，仅使磁吸拨片触发杆与插销可以分离即可），然后将静音垫贴在磁铁孔背面与拨片座上的方孔外侧位置（如不方便操作，可以先将换挡拨片取下，然后将换挡触发杆从拨片座上分离出来），切勿将静音垫贴在方孔上（此处为拨片光电开关感光区域，静音垫覆盖上去会影响拨片功能）如图示，最后将插销归位并装回螺丝。



06 包装清单

1. CS V2 方向盘

2. 工具包：六角螺丝刀 / 8mm 铝合金接近块 x2 / 静音垫 x4

07 产品参数

环身包覆材质：超纤维皮

车架材质：铝合金 面板材质：

铝合金 拨片材质：锻造碳

纤维 尺寸：13 英寸 磁吸拨

片：2 个 机械键盘质感按键：

6 个

正面旋钮：2 个（20 段内嵌钢珠式）

万向摇杆：2 个（可按压）高亮

LED RGB 灯珠：10 颗

LED 色彩：7 色自定义智能测测：

支持

通过 MOZA Pit House 设置灯光：支持

拆装方式：现实赛车快拆 供电方式：无线

和有线 信号传输方式：无线 磁吸拨片感应

方式：光电无接触式

产品保修卡

产品型号		购买日期	
用户姓名		用户电话	
产品条码		通讯地址	

经销商信息（签章）

产品保修条例

保修期

自购机日起，基座主体，方向盘，踏板和仪表显示屏保修 12 个月。设备外壳、说明书、线材、螺丝、扳手、包装等不在“一年免费保修服务”范围内，但您可以选择有偿服务。购买者在以下条件下不享受免费保修服务：

1. 超过三包有效期的；
2. 无三包凭证及有效发票的，但能够证明该产品在三包有效期内的除外；
3. 保修凭证上的型号与维修产品型号不符或者涂改的；
4. 非本公司特约维修人员拆动造成损坏的；
5. 因不可抗力造成损坏的；
6. 未按产品使用说明书要求使用、维护、保养而造成损坏的；保修期限鉴于产品部位、不同国家法律法规等差异，将有所不同。相关国家与区域的保修期限，请咨询 MOZA 官方或购买时联系的 MOZA 授权经销商。

